

AUTODESK® INFERNO® 
2007

AUTODESK® FLAME® 
2007

AUTODESK® FLINT® 
2007

Effects of heroic proportions.

War of the Worlds™ © 2005 Paramount Pictures and Dreamworks, All Rights Reserved. Image courtesy of Industrial Light & Magic.



Autodesk®

Deliver stunning VFX. Create killer commercials. Successfully tackle any post-production task—no matter how demanding the client or complex the project.



Image courtesy of Flickerlab and BUS

Autodesk® Inferno®, Autodesk® Flame®, and Autodesk® Flint® compositing systems provide the ultimate high-performance creative toolsets to push the limits of your imagination and deliver amazing visual effects.

In film, it's about large numbers of complex shots. In post, it's about satisfying your clients, selling their products, and making it look better than real. In broadcast, it's about getting your content to air—fast. You need to see the visual possibilities and be limited only by your imagination—not your creative tools.

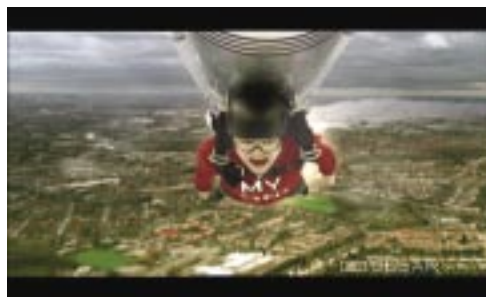


Image courtesy of Clear Ltd.

Ignite Your Creativity

Use intuitive interfaces for precision tools such as 3D Tracking, Motion Estimation, Colour Warper™ functionality, and the Master Keyer to explore creative options, push the limits of your production capabilities, and produce the best possible results in whatever format you need—video, HDTV, or 2K cinema.

Strike the Right Pace—Fast

Inferno, Flame, and Flint systems take full advantage of the most powerful multiprocessor graphics workstations. Work with real-time interactivity even in richly detailed, high-resolution effects scenes.

Fuel for Talent

With Autodesk solutions, you can work faster and accelerate your artistic process. Don't "hold that thought"—maintain creative momentum throughout your project, from initial concept to the final result.

Differentiate Yourself

Amazing quality and innovative technique are what set your work apart. Completing the work on time and within budget is what makes your business thrive. Deliver dynamic, high-quality content without breaking your schedule or your customers' trust. Inferno, Flame, and Flint offer reliable performance in the face of any production challenge. The Autodesk advanced system, mixed-resolution workflow in uncompressed 4:4:4 RGB lets you take on any kind of creative assignment.



Image courtesy of Impossible Pictures

For the best artists in the industry. Experience the creative freedom of using the best visual effects tools available today. With Inferno, Flame, and Flint available on blazingly fast 64-bit, multicore Linux® workstations, realizing your creative ideas just became a whole lot faster, too.

Choose the system that works for you:



Image courtesy of Rushes Post Production



Image courtesy of Absolute Post



Image courtesy of !Impossible Pictures

Autodesk Inferno

Scintillating speed

Are clients watching over your shoulder while you craft the next award-winning VFX shot? Inferno delivers what you need to thrive under pressure—deftly handling the largest, most complex types of effects work. It's the ultimate hero box.

Autodesk Flame

Scorchingly fast

Need to meet aggressive deadlines without sacrificing creative options? Flame offers 15 years of production-proven performance—it's the power horse that helps you deliver top-notch effects and makes your facility stand out from the crowd.

Autodesk Flint

Blistering pace

Need to build killer promos, station ID packages, commercials, and brand graphics in an instant-feedback, real-time creative environment? Look no further—design stunning visual effects for broadcast and video post-production with the high-performance and cost-effective Flint system.

Streamline Your Facility Workflow

Autodesk solutions offer unmatched interoperability and collaboration throughout your production pipeline and are designed to accelerate your digital media creation workflow.

- Transfer clips and load EDLs to share media and collaborate with artists working on other Autodesk systems or to offload administrative tasks, freeing your creative seats for revenue-generating work.
- Exchange clips and metadata with Autodesk® Systems using Autodesk® Wiretap™ technology. This advanced API (application programming interface) provides access to media stored on Autodesk® Stone® disk arrays without the need to convert files or copy media across the network.
- Easily work with media from other creative applications. Use the Soft-Import and Publish features to import source files in their native formats from a centralized location, and export clips from Autodesk creative systems to a standard file system in the format of your choice.
- Acquire and exchange 3D assets and media using the OS-independent Autodesk® FBX® high-end 3D interchange format.
- Share 3D lookup tables (LUTs) with Autodesk® Smoke®, Autodesk® Lustre®, and Autodesk® Toxik™ software products to help ensure that the color and lighting of your shots match up and reduce the need to reapply color correction.



Image courtesy of Flickerlab and BUS



Image courtesy of Clear Ltd.



Image courtesy of A5z

Key Features

Powerful 3D Compositing

The ultimate tool for client-driven graphics design and visual effects creation, Action lets you seamlessly integrate 2D and 3D elements, incorporating live action plates with mappable 3D geometry and particles, lights, and camera motion in a 3D environment. The 64-bit architecture enables you to work on the most complex projects with fluid real-time interaction.

Legendary Graphics Tools

Create your designs and effects in a 4:4:4 RGB workflow for stunning results. The comprehensive toolset boasts acclaimed paint, keying, tracking, color correction, and morphing and warping tools. The node-based workflow of Batch lets you combine these and other tools to create custom processing pipelines. An extensive array of third-party ADN Sparks® plug-ins extends your creative options.

Complete Editing Capabilities

Edit your clips, from sources to entire timelines. Work quickly and intuitively with gestural edits of your video and audio clips. Motion estimation timewarping creates retimed clips with high-quality interpolated frames. Assemble your clips quickly with an EDL, or import clips edited in Smoke while maintaining edits and metadata.

UI and Workflow

Client sessions and looming deadlines demand efficiency. The custom Inferno, Flame, and Flint user interface (UI) accelerates artist workflow. The Clip Library and Desktop organize your projects and work clips. Drag-and-drop makes media management a breeze. Get working creatively—quickly.

High-Performance Storage and I/O

The Autodesk Stone Direct attached storage optimizes workflow with immediate high-resolution playback and faster rendering, and it minimizes facility network traffic. Integrated device control for media ingest and output offers convenience for you and your clients. It also allows for efficient project archiving so you can easily back up your in-progress and completed work.

Interoperability

Inferno, Flame, and Flint fit well in any post-production environment. In addition to handling industry-standard image formats, FBX and Photoshop® PSD support lets you bring in other design elements. Autodesk® Wire® networking software lets your system collaborate with other Autodesk advanced systems, while Wiretap makes it easy and transparent to connect with third-party applications.

Burn Background Rendering

Boost your productivity with the Autodesk® Burn™ Linux-based network processing solution. With Burn, processing is distributed over shared render nodes so shots can be completed more quickly—reducing production costs and time. Burn nodes process Batch clips in the background, simultaneously freeing your system for more creative tasks.

A Digital Future You Can Build Upon

Inspired by our customers' passion for their work, Autodesk is focused on leading innovation in digital media technology and providing the most advanced creative tools on the market today. We provide collaborative, productive tools that allow artists more time to focus on what they do best—create.

We've got you covered.

You've invested in an Autodesk® system to help you realize your creative vision. Learn how Subscription can help you boost productivity, increase ROI, and stay ahead of the curve. As a holistic approach to maintaining your creative software environment, Autodesk® Subscription for Advanced Systems provides complete coverage for both your creative applications and your infrastructure software.

For more information about Autodesk Inferno, Flame, and Flint, visit

www.autodesk.com/inferno

www.autodesk.com/flame

www.autodesk.com/flint

To purchase the software or to obtain product information:

North America: **+1-800-869-3504**

International: **+415-507-4461**

Email: med_ent@autodesk.com